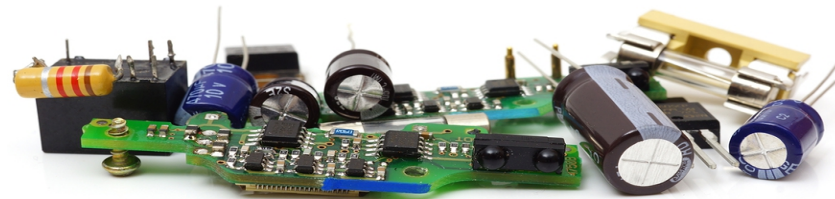
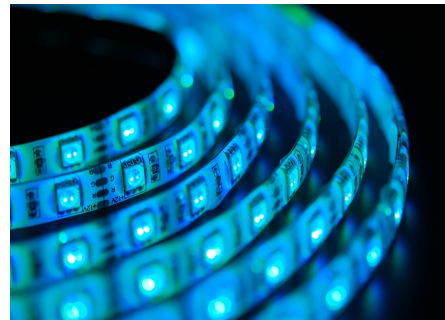
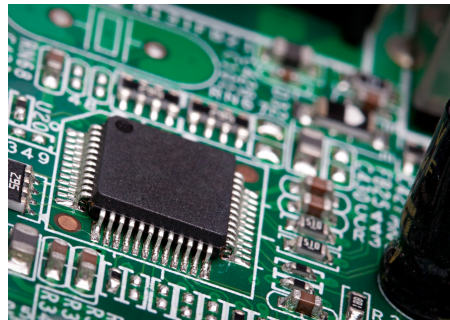


# RoHS

## Manufacturer List



**Manufacturer:**      **How Identified:**

<b>Actel</b>	X79 Suffix
<b>Agilent</b>	G Suffix on FR xstrs & diodes; transitional green dot on PLCC
<b>Allegro</b>	T Suffix
<b>Alliance Semiconductor</b>	F Suffix
<b>Altera</b>	N Suffix
<b>AMD</b>	P/N change. Varies by series
<b>AMI Semi</b>	P/N change. Transitional labels on all containers
<b>Amphenol</b>	See website: <a href="http://www.amphenol.com">www.amphenol.com</a>
<b>Analog Devices</b>	Z Suffix
<b>Analog Integration</b>	See website: <a href="http://www.analog.com">www.analog.com</a>
<b>Arizona Microtek</b>	+ Suffix
<b>Artesyn</b>	No P/N Change
<b>Atmel</b>	P/N change, varies by series
<b>AVX</b>	Compliance chart: <a href="http://www.avx.com">www.avx.com</a>
<b>BI Tech</b>	LF Suffix on some parts: Date Code Identifier
<b>Bourns</b>	Compliance chart: <a href="http://www.bourns.com">www.bourns.com</a>
<b>Broadcom</b>	G Suffix, Labels on shipping containers
<b>Bulgin</b>	Compliance chart: <a href="http://www.bulgin.co.uk">www.bulgin.co.uk</a>
<b>Catalyst Semiconductor</b>	See website: <a href="http://www.catsemi.com">www.catsemi.com</a>
<b>Cirrus Logic</b>	Z Suffix
<b>Conexant</b>	P/N change, varies by series
<b>Cypress Semiconductor</b>	X Suffix
<b>Cornell</b>	Compliance chart: <a href="http://www.cde.com">www.cde.com</a>
<b>Elna</b>	See website: <a href="http://www.elna.co.jp">www.elna.co.jp</a>
<b>EPCOS</b>	No P/N change. Identify by date code
<b>Epson</b>	A2 or B2 Suffix

**Manufacturer**      **How Identified**

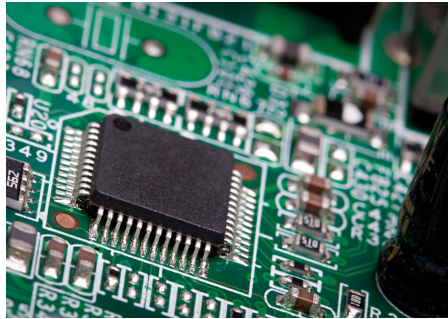
<b>Erni</b>	Compliance Search: <a href="http://www.erni.com">www.erni.com</a>
<b>Evox Rifa</b>	No P/N Change, labels on containers & packaging
<b>Fairchild</b>	NL or NF Suffix
<b>FCI</b>	LF Suffix
<b>Freescale</b>	P/N change, varies by series
<b>Fujitsu</b>	E1 Suffix
<b>Grayhill</b>	Compliance chart: <a href="http://www.grayhill.com">www.grayhill.com</a>
<b>Halo</b>	RL Suffix
<b>Harting</b>	No P/N Change. Identify by Revision Status & label
<b>Hirose</b>	Compliance Search: <a href="http://www.hirose.co.jp">www.hirose.co.jp</a>
<b>Holtek Semiconductor</b>	# Suffix on some parts. Labels on cartons.
<b>Hynix</b>	See website: <a href="http://www.hynix.com">www.hynix.com</a>
<b>IDT</b>	G Suffix
<b>Infineon</b>	Date Code identifier
<b>Intel</b>	P/N Change, varies by series
<b>Intersil</b>	Z Suffix
<b>Int'l Rectifier</b>	P or PBF Suffix
<b>IRC</b>	Compliance chart: <a href="http://www.irctt.com">www.irctt.com</a>
<b>ITT Cannon</b>	Compliance chart: <a href="http://www.ittcannon.com">www.ittcannon.com</a>
<b>ITW Pancon</b>	See website: <a href="http://www.itwpancon.com">www.itwpancon.com</a>
<b>ITW Switches</b>	Compliance chart: <a href="http://www.itwswitchcon.com">www.itwswitchcon.com</a>
<b>JST</b>	Compliance chart: <a href="http://www.jst.com">www.jst.com</a>
<b>Kemet</b>	P/N change, varies by series
<b>KOA</b>	Check individual datasheet for compliance info
<b>Kyocera</b>	Compliance chart: <a href="http://www.global.kyocera.com">www.global.kyocera.com</a>
<b>Lattice</b>	TN, FN, MN or NN Suffix

**Manufacturer:**                      **How Identified:**

<b>Linear Tech</b>	PBF Suffix
<b>Littelfuse</b>	Compliance chart: <a href="http://www.littelfuse.com">www.littelfuse.com</a>
<b>LSI Logic</b>	See website: <a href="http://www.lsilogic.com">www.lsilogic.com</a>
<b>Macronix</b>	G Suffix
<b>Maxim/Dallas</b>	+Suffix
<b>Methode Connectors</b>	G or W Suffix
<b>Micrel</b>	P/N Change, varies by series
<b>Microchip</b>	G Suffix during transition, then no P/N change
<b>Micron</b>	P/N change, varies by series
<b>Microsemi</b>	See website: <a href="http://www.microsemi.com">www.microsemi.com</a>
<b>Molex</b>	See website: <a href="http://www.molex.com">www.molex.com</a>
<b>Murata</b>	Compliance chart: <a href="http://www.murata.com">www.murata.com</a>
<b>National Semi</b>	NOPB Suffix
<b>NEC</b>	A, AZ or AT Suffix
<b>Oki Semi</b>	No P/N change; lot code will have J Suffix
<b>Omron</b>	Compliance chart: <a href="http://www.europe.omron.com">www.europe.omron.com</a>
<b>ON Semiconductor</b>	G Suffix
<b>Osram</b>	Z Suffix on some parts; Date code ID on others
<b>Panasonic</b>	No P/N change in most cases
<b>Panduit</b>	See website: <a href="http://www.panduit.com">www.panduit.com</a>
<b>Pericom</b>	E Suffix
<b>Philips</b>	Date Code Identifier
<b>Pulse</b>	NL Suffix (NLT for tape & reel) on most products
<b>Renesas</b>	U, V, W or X within last 4 digits on some parts
<b>Richco</b>	Compliance chart: <a href="http://www.richco-inc.com">www.richco-inc.com</a>
<b>Ricoh</b>	Compliance chart: <a href="http://www.ricoh.com">www.ricoh.com</a>

**Manufacturer**                      **How Identified**

<b>Samsung</b>	P/N change, varies by series
<b>Samtek</b>	See website: <a href="http://www.samtec.com">www.samtec.com</a>
<b>Sharp</b>	F Suffix
<b>Sirenta</b>	Compliance chart: <a href="http://www.sirenta.com">www.sirenta.com</a>
<b>Skyworks</b>	LF Suffix
<b>SMSc</b>	P/N change, varies by series
<b>Sony</b>	P/N change
<b>Spanion</b>	13 <sup>th</sup> digit of P/N – F instead of A
<b>SST</b>	E or F Suffix
<b>ST Micro</b>	Date code/label identifier
<b>Supertex</b>	G Suffix
<b>Syfer</b>	Compliance search: <a href="http://www.syfer.com">www.syfer.com</a>
<b>Taiyo Yuden</b>	Compliance chart: <a href="http://www.yuden.co.jp">www.yuden.co.jp</a>
<b>TDK</b>	Compliance chart: <a href="http://www.tdk.co.jp">www.tdk.co.jp</a>
<b>Texas Instruments</b>	P/N change & Date Code identifier
<b>Toshiba</b>	F or G Suffix (F=completely lead free G=terminals lead free)
<b>Tyco</b>	See website: <a href="http://www.tycoelectronics.com">www.tycoelectronics.com</a>
<b>Vishay</b>	P/N change, varies by series
<b>Welwyn</b>	No P/N change, labels on packaging
<b>WIMA</b>	Compliance chart: <a href="http://www.wima.com">www.wima.com</a>
<b>Wolfson Micro</b>	See website: <a href="http://www.wolfsonmicro.com">www.wolfsonmicro.com</a>
<b>Xilinx</b>	G Suffix
<b>Yamaha</b>	Z Suffix
<b>Yamaichi</b>	Check individual datasheet for compliance info
<b>Zetek</b>	No P/N change, identify by Date Code
<b>Zilog</b>	G Suffix



# RoHS

## Manufacturer List



We hope you find this guide useful, however if the manufacturer you require is not shown, you can contact us on +44 (0)1904 415 415 or email [web@cyclops-electronics.com](mailto:web@cyclops-electronics.com)

Disclaimer: While every effort has been made to ensure the accuracy of this information, no acceptance can be made for any liabilities relating to errors, omissions or subsequent changes to manufacturer's products. Readers should contact the Cyclops Group for confirmation of the current status before acting on the information above. Reproduction in part or whole of our leaflet without our prior written consent is strictly prohibited

